

HP Protect and Trace with Wolf Connect



HP WOLF SECURITY

THE CHALLENGE

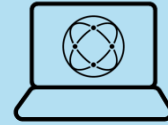
Managing a fleet of mobile PCs is increasingly difficult

Hybrid work, temporary staff, and edge computing create challenges in two broad categories



Asset Management

- Accurately track PC hardware across the lifecycle
- Avoiding lost productivity and increased costs

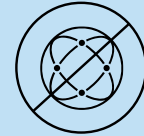


Data Security

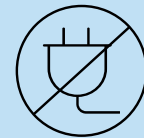
- Maintain control of data
- Avoid costly and embarrassing data breaches

Existing fleet management solutions require the PC being on, and network connected

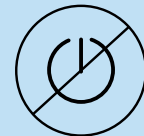
But what if the PC is...



Not on a network



Powered down



Not able to boot

We're out of luck!



Introducing Wolf Connect

A game changer
for PC fleet
management

HP Confidential. For use by HP Internal Sales and Channel Partners under HP CDA for training purposes only

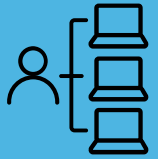


HP WOLF SECURITY

What is Wolf Connect?



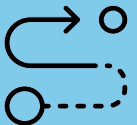
Wolf Connect is a low-cost cellular-based management connection to HP PCs.



It allows IT to interact with their PC fleet globally, even when offline or powered down.



It is the infrastructure that allows IT to reliably communicate with the PCs.



HP's vision is to use Wolf Connect to support multiple HP offerings and applications over time.

Wolf Connect Components

“Narrowband” cellular card (MNB)

- Uses LTE-M standard for low cost and low power consumption
- [4 or 5G WWAN card also supported]

Special cellular subscription

- Provided by HP
- Dedicated to Wolf Connect (does not provide Internet access for user)
- Global reach



Select 2023 PCs
include hardware
updates required for
Wolf Connect

Solution Architecture

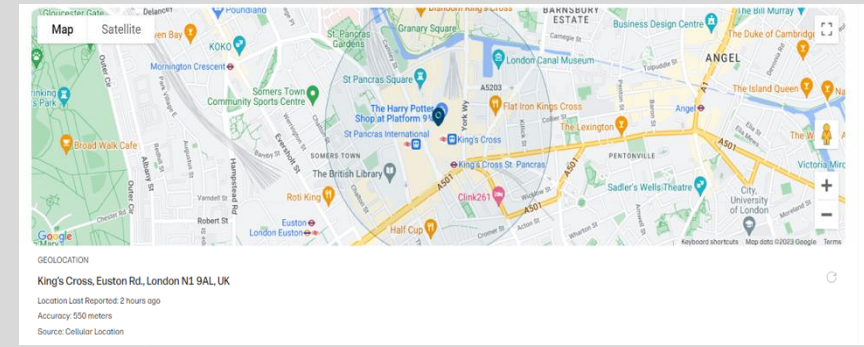
Integrated with HP TechPulse

Cloud-based management

Unified operations (Active Care, Proactive Insights)

Separation of duties protects organization from denial-of-service attack

IT Admin



HP TechPulse
Centralized Management

Approver App

Secure approval
required for
sensitive actions



End User PCs

Cellular Module
Endpoint Security Chip

HP Protect and Trace with Wolf Connect

Remotely Find, Lock, and Erase a PC, even when powered down or disconnected from the Internet



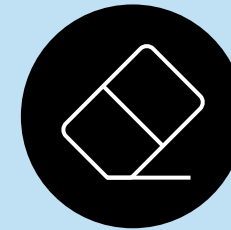
Find

Locate device
in real time



Lock

Temporarily lock a PC that
has gone missing



Erase

Erase PC data on
unrecoverable or retired PC

When a PC is lost or stolen...

Here's how HP Protect and Trace with Wolf Connect will help



User loses PC



User reports loss
to Help Desk



Help Desk
remotely locks PC



Help Desk reports
PC location to user

01

If PC recovered,
Help Desk gives
“unlock code” to user

02

If PC unrecoverable,
IT obtains approval and
remotely erases PC

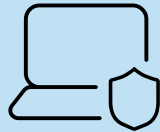
Business Outcomes Supported

Solving challenges across asset management, security, and beyond



Asset Management

Maintain tighter control over PC fleet to decrease cost, including for temporary staff



Data Security

Security data from unauthorized from access



Financial Risk Management

Decrease risk of equipment loss for as a service leasing



Find my PC

Assist users whose PC has been lost or stolen



Device Lifecycle Sustainability

Manage devices from deployment to retirement, re-issue or recycle



Audit & Compliance

Decrease risk of equipment loss for as a service leasing

HP Protect and Trace¹ with Wolf Connect

Changing the game for PC fleet management



Protect sensitive data



Improve Asset Management



Help lower IT costs and improve responsiveness



Improve user experience and peace of mind



Thank You

