

Printing with Investment Protection

HP FutureSmart 5

Make your HP Enterprise devices easier to use and even more productive—today and well into the future.



Future investment protection

Fleet upgradable and extensible

Designed to be upgradable, HP FutureSmart firmware helps you keep your HP printers, MFPs, and network scanners up-to-date. Get the latest security enhancements, as well as improvements to other productivity features. As technology evolves over time, your compatible HP FutureSmart devices will be poised to adopt new features.¹

Device firmware has a significant effect on your imaging and printing environment. Like a PC's operating system, firmware coordinates hardware functions; runs the control panel; determines what features are available when faxing, emailing, or scanning a document; and provides device network security.

With traditional firmware, fleet-wide upgrades are cumbersome and time-consuming. There is typically no support for the new imaging and printing features and capabilities that are continually developed after a device is released.



HP FutureSmart allows your existing compatible HP devices to be equipped with the same features as next-generation devices.¹ Rather than driving device obsolescence with technology changes, HP FutureSmart helps them remain useful and productive for years to come.

Uniquely upgradeable to provide investment protection for your fleet

Designed for OS-like upgradability by letting IT upgrade on their own maintenance schedule

Maintains a consistent user interface, feature set, and device experience across the fleet for the end user

The world's most secure devices with detection and recovery capability²

Embedded security capabilities

HP FutureSmart firmware provides the latest solution, security, and fleet features for your compatible HP Enterprise devices. With HP FutureSmart 5, you will be able to stay current with the features that enable the world's most secure devices.²

HP SureStart validates the integrity of the BIOS code with self-healing by reverting to a golden copy if needed.

Whitelisting confirms the authenticity of the firmware code with an HP digitally signed certificate, meeting government standards for security.

Run-time intrusion detection with self-healing reboots automatically if attacked.

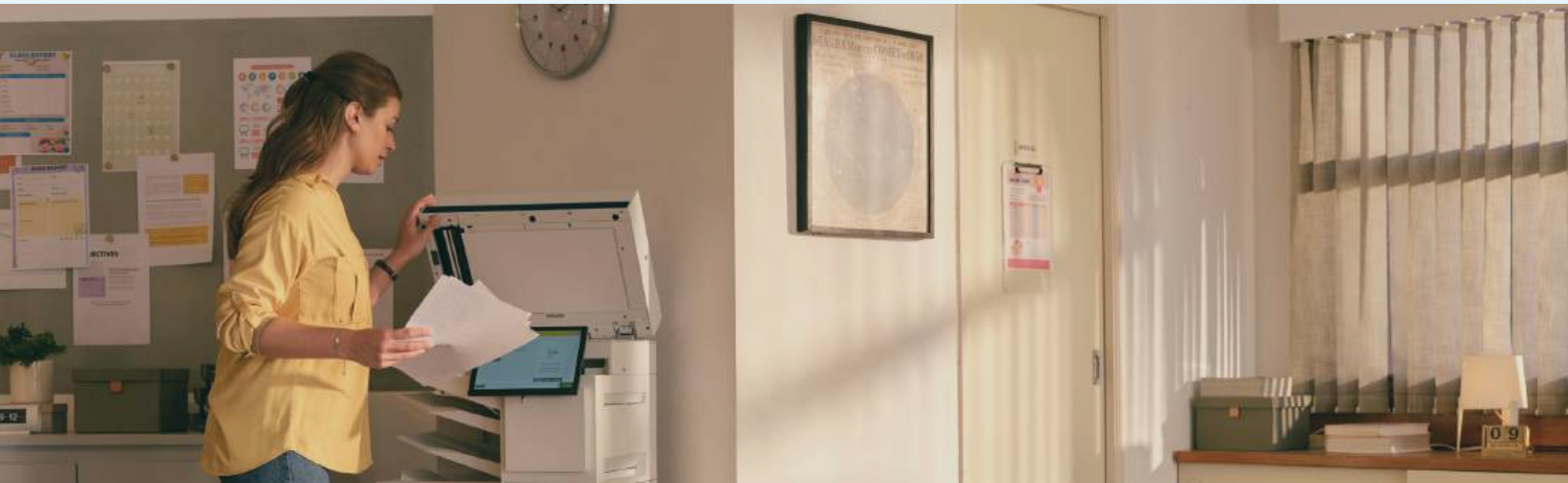
HP Connection Inspector monitors and analyzes outbound network traffic with self-healing automatic reboot if anomalies are detected.



HP FutureSmart is available on a wide range of HP devices, ensuring compatibility across your entire fleet. Whether you need A3 or A4, color or monochrome, single-function or multi-function printers, HP FutureSmart offers a solution to meet your specific requirements. This broad compatibility allows you to standardize your printing environment with the latest technology, regardless of your individual device needs.

Clean and simple

HP FutureSmart helps make it easy for your office users to be more productive. A modern, tablet-like interface keeps things simple and intuitive across your fleet of compatible HP Enterprise devices. Improved image preview takes the guesswork out of scanning and copying. A scalable interface for the control panel improves future extensibility and allows new possibilities for customization, along with a robust set of new apps and usability features. The message center, with detailed information and helpful animations, makes it easy to address device events. Best of all, HP FutureSmart 5 works with both new and existing compatible HP Enterprise devices, allowing you to prepare for the future, while enjoying the best HP has to offer today.¹



Count on consistency across the fleet

Inconsistency across your fleet can lead to higher IT costs. With HP FutureSmart, you can maintain a reliable feature set and user experience across your fleet of enabled HP Enterprise MFPs, printers, and network scanners. By providing consistent control panels, menus, messages, and features; HP FutureSmart makes it easy and intuitive to work among different devices.

HP FutureSmart also makes your printing and imaging environment easier to manage. With HP Web Jetadmin, IT can centrally manage user interfaces and configure or update HP FutureSmart feature settings across all compatible devices in the fleet.^{1,3}

Upgrade to a modern interface

The simplified, modern-looking home screen displays just five core apps by default. Additional apps are easily accessed by swiping right to left, like you would with a smartphone or tablet.



More device security and management features

Embedded Web Server

The Embedded Web Server (EWS) UI is tailored to accommodate smart device displays, changing navigation options based on screen size. You can even search the more robust help feature.

Enhanced security configurations

Security features include:

- Password security features, such as Account Lockout, password complexity, and minimum password length.
- Copy features, including predefined and customizable watermarks you can make available to end users. You can also deploy optional or admin-enforced custom and dynamic copy stamps.
- Network protection with the HP Connection Inspector, which examines outgoing network connections to stop suspicious requests and thwart malware.



Serverless Job Accounting

Designed for small businesses with fewer than ten printers, Serverless Job Accounting provides simple statistics and quota functionality.

- Track and report mono and color copied sides, mono and color printed sides, scanned sides, and sent fax sides.
- Set quotas for print, copy, and digital send.

Easily deploy third-party solutions

HP FutureSmart devices use the HP Open Extensibility Platform (OXP). OXP creates a unified environment that makes it easy for third-party software companies to design solutions that integrate seamlessly with enabled imaging and printing devices.

HP FutureSmart 5 continues to improve productivity

Preview and edit documents right from the control panel

You can use the enhanced image preview feature for both copies and scans to minimize steps and reduce errors. From the device's touchscreen control panel, view and edit your scan job before you send it to a network folder, fax, email, or USB device. Easily edit scans to look just the way you want them by instantly previewing and modifying them before sending to their destination.



The user interface enables swipe, rotate, and drag-and-drop capabilities



You can start a preview prior to committing to the copy job

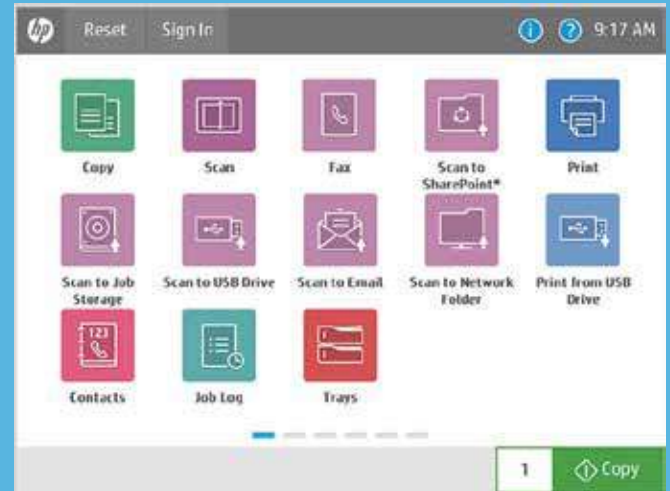


- Zoom
- Rotate pages
- Delete pages
- Change page order
- Add pages (job build)
- Cancel job

Effortless document management

More control panel
customization options
combined with
configurable folders

Meet the needs of your users by customizing what they use most. You can add screens for up to 15 icons per page and up to 10 pages.



Use your logo and
set wallpaper

Now you can add your company
logo to the user interface and
change the wallpaper

Custom Color Manager

Set custom color profiles for your HP fleet
devices. Easily determine whether custom color
themes have been installed, and identify all
themes that have been enabled on the device,
via the device configuration page.



Support for Microsoft Universal Print

Enables basic direct and QR code print capability for customers using the Microsoft Universal Print cloud services.

- Standard on HP FutureSmart 5 compatible printers & MFPs, including HP LaserJet Managed E730/731/785/786/826/877 series, HP LaserJet Enterprise 8500/8601/8801 series, HP LaserJet Enterprise X500/X600/5000/6000 series, HP LaserJet Enterprise & Managed 400/500/600 series (requires FutureSmart 5.8.1.1 or later)



Scan to Searchable PDF (OCR)

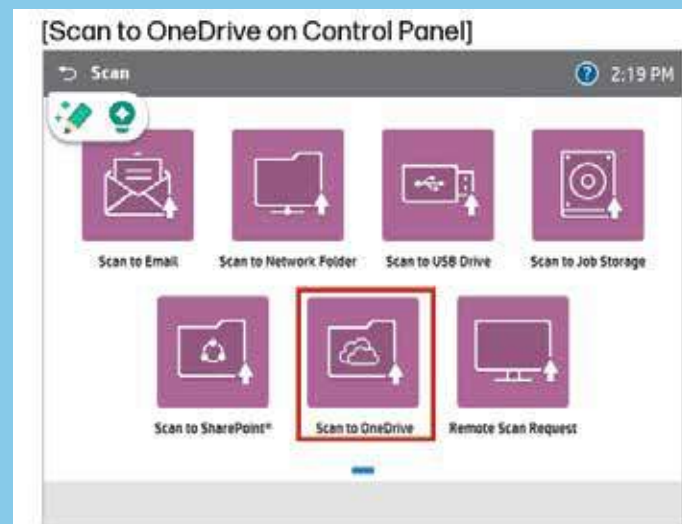
The latest HP FutureSmart MFPs now come standard with the ability to scan and capture text to digitize documents. With built-in OCR (Optical Character Recognition), you can turn paper documents into searchable PDFs without any extra software. Increase the speed of OCR scanning with an optional Workflow accelerator card.

- Standard on HP LaserJet Managed E730/731/785/786/826/877 series, HP LaserJet Enterprise 8601/8801 series, HP LaserJet Enterprise X500/X600/5000/6000 series, (requires FutureSmart 5.8.1.1 or later)

Scan to OneDrive and Scan to SharePoint Online

With enhanced integration with Microsoft 365, users can scan directly into OneDrive and SharePoint Online from the MFP. This streamlined workflow allows for seamless document management and collaboration. The device supports both standard OneDrive and OneDrive for Business accounts, accessible through secure sign-in at the control panel.

- Standard on HP LaserJet Managed E730/731/785/786/826/877 series, HP LaserJet Enterprise 8601/8801 series, HP LaserJet Enterprise X500/X600/5000/6000 series, (requires FutureSmart 5.8 or later)



Spring 2025 release



Editable OCR

Improve end-user productivity by transforming paper into editable documents. Quickly turn your scans into Office files (docx, pptx, xlsx). Documents are easy to find, edit and share, so you can save time and work more efficiently. Easy MFP device feature, no add-on software required.

- Standard on HP LaserJet Managed E730/731/785/786/826/877 Flow MFPs, HP LaserJet Enterprise 8601/8801 Flow MFPs, HP LaserJet X579/X580/X677/5800/6800/6801 Flow MFPs (requires HP FutureSmart 5.9 firmware)
- Optional on HP LaserJet Managed E730dn/731dn/785dn/786dn/826dn/877dn MFPs with feature license (A74PVAEE - HP Editable OCR A3)
- Optional on HP LaserJet Enterprise X579dn/X580dn/X677dn/X677s MFPs with feature license (BK5S6AAE - HP Editable OCR A4)

Protected Access

Protected Access with Microsoft Entra ID enables user authentication and supports password less and mobile sign-on for customers that use Microsoft® Entra ID as their cloud identity provider. Enables user authentication for Scan-to-Onedrive and Sharepoint Online at the MFP.

- Standard on HP LaserJet Managed E730/731/785/786/826/877 series MFPs, HP LaserJet Enterprise 8601/8801 MFPs, HP LaserJet Enterprise X579/X580/X677/5800/6800 series MFPs, HP LaserJet Enterprise & Managed 400 series MFPs (requires HP FutureSmart 5.9 firmware)

FADGI (US only)

First MFPs to meet federal digital archive requirements (FADGI). Allow MFPs to scan directly into FADGI mode - eliminating the need for dedicated scanners or shipping of secure documents. HP FADGI allows remote calibration - most solutions require on site visit in addition to dedicated equipment.

- Optional on HP LaserJet Managed E730/731/785/786/826/877 MFPs with feature license (A74PXAAE - HP FADGI A3)
- Optional on HP LaserJet Enterprise X579/580/X677 MFPs with feature license (BK5S7AAE - HP FADGI A4)

Print Quality Diagnostics

Enables to remotely diagnose print quality issues by capturing and analyzing images of test pages, providing step-by-step guidance for resolution to service providers. The Print Quality Diagnostics app is a cloud-based solution within the on-device services app that is managed by service providers. The app helps print service providers remotely diagnose print quality issues the customer may be having.

- Supported on HP LaserJet Managed E730/731/785/786/826/877 MFPs, HP LaserJet Enterprise X579/X580/X677 MFPs, HP LaserJet Managed E526/625/626/676 MFPs, HP LaserJet Managed E425/475 MFPs (for service providers with HP Smart Device Services)

Make the most of your device investments through upgrades

HP FutureSmart firmware allow you to upgrade your compatible HP FutureSmart devices with the latest features, security, and changes to device functionality. Major new releases are easily identifiable with the release number directly following the “HP FutureSmart” name (for example, HP FutureSmart 5.8).

HP FutureSmart upgrades can be performed at the device, using Embedded Web Server, or across the fleet, using HP Web Jetadmin.³

Ensure your fleet of HP devices has the latest security and features by upgrading your firmware today.

HP FutureSmart is compatible with a wide range of HP LaserJet devices, ensuring you can benefit from the latest technology across your fleet. This includes all currently sold HP LaserJet Managed & Enterprise 400 through series 800 printers, as well as a large part of HP LaserJet Managed & Enterprise 400 through series 800 printers sold since 2017.

For a comprehensive list of compatible devices, please visit: hp.com/go/futuresmart



Sign up for updates hp.com/go/getupdated

1. Over time, some features enabled by new FutureSmart major release upgrades may not be available on older legacy devices if, for example, physical hardware capabilities limit new feature operation. HP FutureSmart 5 does not support 4-line displays or first-generation FutureSmart products. For a full list of incompatible devices, visit hp.com/go/futuresmart.

2. HP's most advanced embedded security features are available on HP Managed and Enterprise devices with HP FutureSmart firmware 4.5 or above. Claim based on HP review of 2019 published features of competitive in-class printers. Only HP offers a combination of security features to automatically detect, stop, and recover from attacks with a self-healing reboot, in alignment with NIST SP 800-193 guidelines for device cyber resiliency. For a list of compatible products, visit hp.com/go/PrintersThatProtect. For more information, visit hp.com/go/PrinterSecurityClaims.

3. HP Web Jetadmin is available for download at no additional charge at hp.com/go/webjetadmin.

© Copyright 2024-2025 HP Development Company, L.P. The information contained herein is subject to change without notice. The only warranties for HP products and services are set forth in the express warranty statements accompanying such products and services. Nothing herein should be construed as constituting an additional warranty. HP shall not be liable for technical or editorial errors or omissions contained herein. Microsoft, Office 365, and SharePoint are registered trademarks of Microsoft Corporation in the United States and/or other countries.

4AA6-9365ENW

